

TSK-GEL® PWXL-CP

Size Exclusion Chromatography Columns for Cationic Polymer Analysis

PRODUCT HIGHLIGHTS

- ◆ High recoveries for cationic polymers (see Table 2)
- ◆ High reproducibility over time without adsorption (see Figure 1)
- ◆ Column offering allows separation of wide MW range of polymers
- ◆ Elution under low salt conditions

INTRODUCTION

TSK-GEL PWXL-CP size exclusion columns were specifically developed for the analysis of water soluble cationic polymers. Three columns are available within the TSK-GEL PWXL-CP series, each with a different particle size, separation range and exclusion limit, allowing polymers within a wide molecular mass range to be separated and characterized.

The analysis of cationic polymers requires a high salt concentration in the mobile phase to prevent adsorption of the polymers onto the particles in SEC columns. As a result, many polymer researchers encounter low recovery when analyzing cationic polymers, as well as poor reproducibility from run to run.

The TSK-GEL PWXL-CP columns eliminate ionic adsorption onto the particle by incorporating a cationic functionality on the particle surface. This modification results in high recovery for cationic polymers and enables elution under low salt conditions.

PROPERTIES OF TSK-GEL PWXL-CP COLUMNS

	G3000 PWXL-CP	G5000 PWXL-CP	G6000 PWXL-CP
Base material	Poly methacrylate	Poly methacrylate	Poly methacrylate
Particle size	7 µm	10 µm	13 µm
Exclusion limit (Da)	100 000	1 000 000	20 000 000
Separation range (Da), (PEO, PEG)	200 - 50 000	400 - 500 000	1 000 - 10 000 000
Theoretical plates	16 000	10 000	7 000

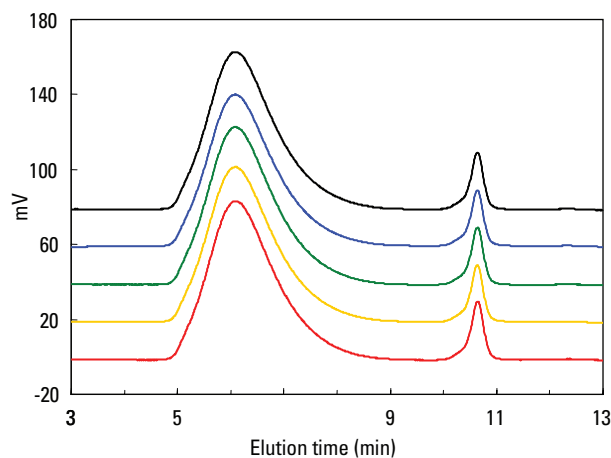
➤ TABLE 1

Column	Recovery
G3000 PWXL-CP	100,2%
G5000 PWXL-CP	98,8%
G6000 PWXL-CP	97,4%

➤ TABLE 2

These columns show high theoretical plate values, linear calibration curves and high durability because the base resin is the same as that used in the TSK-GEL PWXL series columns.

PAA was injected onto a TSKgel G5000PWXL-CP column. Each chromatogram, from the first injection (red) to the fifth injection (black), showed similar elution profiles without any adsorption of the polymer.



➤ FIGURE 1

Column: TSKgel G5000PWXL-CP
 Eluent: 0.1 mol/l NaNO₃
 Flow rate: 1.0 ml/min
 Detection: RI
 Temperature: 25°C
 Sample: polyallyamine-HCl (PAA)
 Sample load: 3 g/l, 100 µl

Application

Various cationic polymers with different functional groups and molecular weights were injected on the TSK-GEL PWXL-CP columns (TSKgel G6000PWXL-CP, G5000PWXL-CP and G3000PWXL-CP, connected in series). Figure 2 demonstrates that these new SEC columns can be utilized for the analysis of a wide variety of cationic polymers.

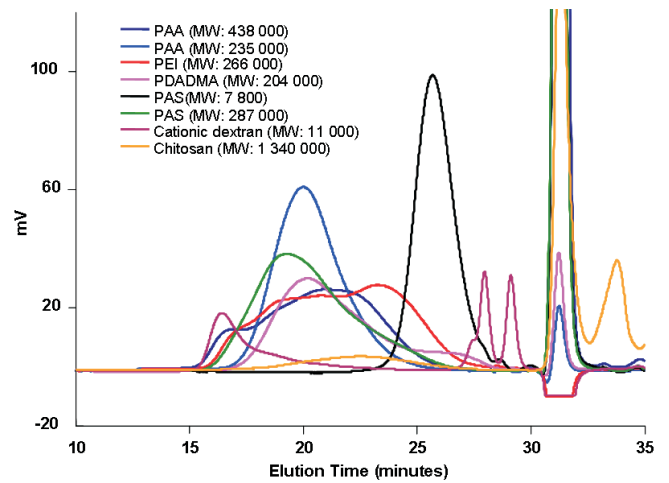


FIGURE 2

Column: TSKgel G3000PWXL-CP, 7 μ m,
7.8 mm ID X 30 cm L
TSKgel G5000PWXL-CP, 10 μ m,
7.8 mm ID X 30 cm L
TSKgel G6000PWXL-CP, 13 μ m,
7.8 mm ID X
30 cm L

Eluent: 0.1 mol/l NaNO_3

Flow rate: 1.0 ml/min

Detection: RI

Temp.: 25°C

Sample load: 3 g/l, 100 μ l

**For further details of choice and selection of the TSK-GEL® column
that best suits your particular process purification needs,
please contact us:**

Tel. + 49 (0) 711 13257 0

or

info.sep.eu@tosoh.com

or

www.tskgel.com

Ordering information

TSKgel PWXL-CP

Part-No	Description	Matrix	Housing	Dimensions
21873	TSKgel G3000PWXL-CP, 7 µm, 200 Å	Polymer	Stainless steel	7.8 mm ID x 30 cm L
21874	TSKgel G5000PWXL-CP, 10 µm, 200 Å	Polymer	Stainless steel	7.8 mm ID x 30 cm L
21875	TSKgel G6000PWXL-CP, 13 µm, 200 Å	Polymer	Stainless steel	7.8 mm ID x 30 cm L
21876	TSKgel PWXL-CP Guardcolumn	Polymer	Stainless steel	6.0 mm ID x 4.0 cm L

Headquarters

JSB International
Tramstraat 15
5611 CM Eindhoven
T +31 (0) 40 251 47 53
F +31 (0) 40 251 47 58

Zoex Europe
Tramstraat 15
5611 CM Eindhoven
T +31 (0) 40 257 39 72
F +31 (0) 40 251 47 58

Sales and Service

Netherlands
Apolloweg 2B
8239 DA Lelystad
T +31 (0) 320 87 00 18
F +31 (0) 320 87 00 19

Belgium
Grensstraat 7
Box 3 1831 Diegem
T +32 (0) 2 721 92 11
F +32 (0) 2 720 76 22

Germany
Max-Planck-Strasse 4
D-47475 Kamp-Lintfort
T +49 (0) 28 42 9280 799
F +49 (0) 28 42 9732 638

UK & Ireland
Cedar Court,
Grove Park Business Est.
White Waltham, Maidenhead
Berks, SL6 3LW
T +44 (0) 16 288 220 48
F +44 (0) 70 394 006 78

info@go-jsb.com
www.go-jsb.com



With courtesy of TOSOH

TOSOH BIOSCIENCE®

