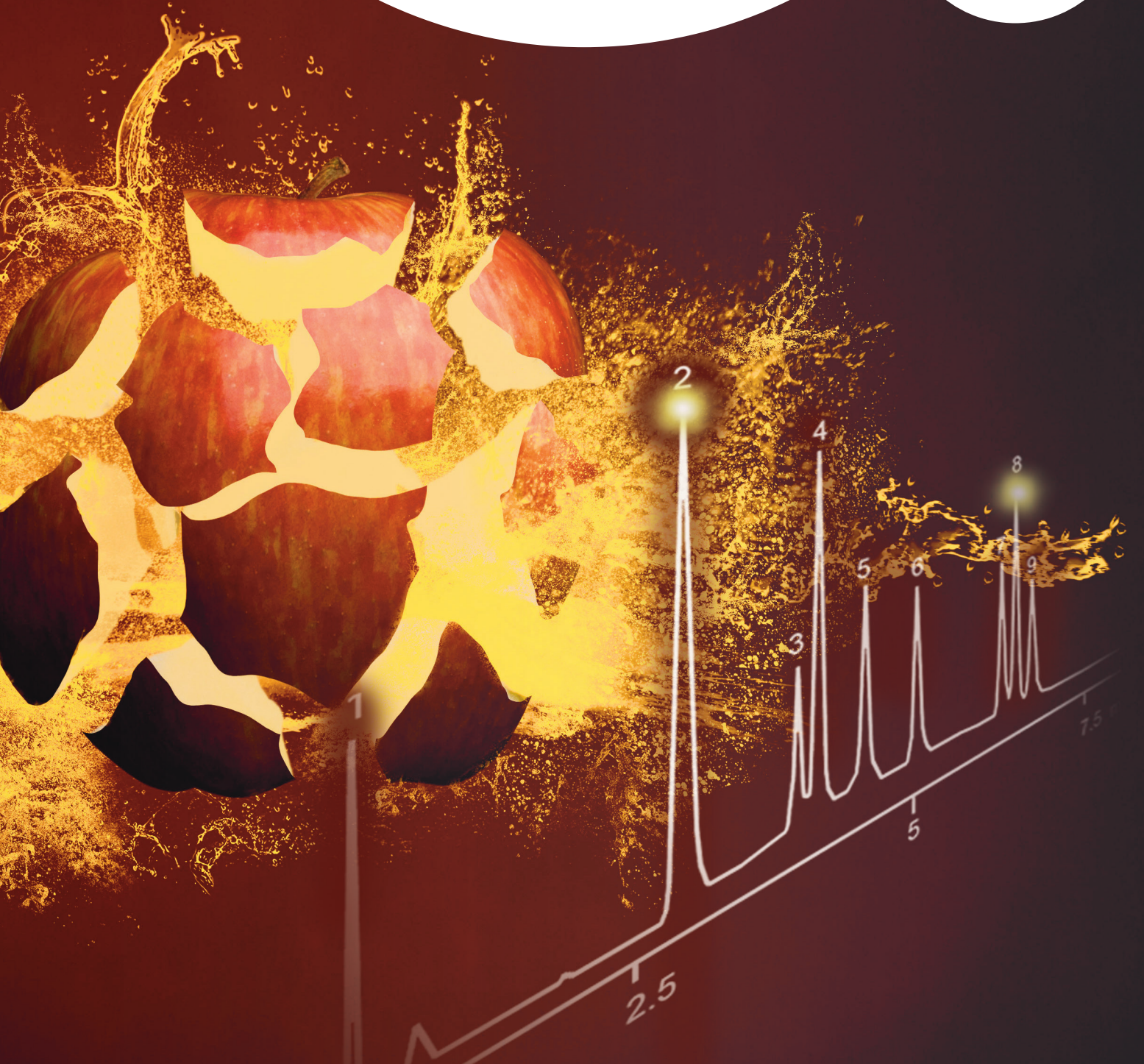




JSB is an authorised partner of
 **Agilent Technologies**
Premium Solution Partner



**SHARPER PEAKS,
BETTER SEPARATIONS**

JSB CAN HELP YOU SOLVE YOUR MOST DEMANDING CHALLENGES IN CHROMATOGRAPHY. WHETHER THESE CHALLENGES ARE INSTRUMENT SOLUTIONS, APPLICATIONS OR WORK FLOW SOLUTIONS, JSB HAS THE RIGHT SOLUTION FOR YOU.



GCXGC QTOF

JSB is an authorised partner of



JSB is an official Value Added Reseller of Agilent employing scientists, engineers and software developers to provide you with sophisticated chemical analysis products, from sampling preparation, separation, detection to useful intelligent automation for your day to day work.

By communicating to our customers and listening to their needs, we become inspired to build the best solution to their problem. This can either be specifically designed hardware that is manufactured in our own factory or specially designed applications in our demo laboratory. If what is required to provide the best solution is not commercially available then we will have it designed and produced in our own metal shop. By this approach our Intellectual Property is growing continuously, driven by the demands of our customers. Our innovations are truly driven by the inspiration we get by talking to you as our valued customer.

JSB has maintained a strong service and support driven approach over the years. This in combination with a keen eye on quality, we have established a global network of loyal customers.

Specialising in complete system solutions that is what JSB has in store for you in a great diversity of applications.

Whether you are monitoring impurities in drinking water, analysing pesticides in soil or developing new fuels, our solutions provide you with the sensitivity, flexibility and productivity that your lab requires.

JSB is a Value Added Reseller of Agilent Technologies and therefore creates its solutions on the chromatography platform of Agilent Technologies.

Examples of the unique solutions are:

- the JSB TPH analyzer
- the Photo catalysis reaction monitoring analyser

GC SOLUTIONS, ANALYZERS AND ACCESSORIES

The JSB GC solutions are based on the standard GC models 6850 and 7890 from Agilent Technologies. Our unique all-in-one injector system for large volume and standard injections incorporates the latest developments in injector technology including Peltier cooling options. Next to the standard detectors for GC, JSB has the possibility to supply you with third party detectors ranging from e.g. Pulsed discharge detectors to Time of flight detection.

Overview of some of our GC and MS solutions:

- GCXGC
- GCMSD
- Micro GC
- Valving GC
- Process GC, Ex proof
- Direct Insertion Probe for MSD and QTOF
- RGA/NGA analyzers
- Detection: FID, QTOF, ECD, MSD, QQQMS, TCD, Dual FPD, PPD, HID, TOFMS, SCD, NCD
- Consumables and supplies for GC and MS

SAMPLE PREPARATION

Providing you with the right sample preparation solutions is the first step in the instrument solution for your application.

We can provide you with the following options:

- Pyrolysis
- Purge and Trap
- Headspace (dynamic/static)
- Autosampling (e.g. Combi PAL)
- Cryotrapping
- Thermal Desorption (TD)
- PTV, peltiercooling devices
- SPE, online SPE

AUTOMATION AND WORKFLOW SOLUTIONS

A wide range of automation solutions has been developed over the last couple of years, implementing RFID technology, takes this even a step further. By combining RFID technology with robotics, JSB can offer you a complete automated workflow solution saving you time and giving you absolute certainty of the right results. Completely in compliance with the latest regulations such as CFR21 part 11.

- Audit trail solutions
- Workflow solutions
- RFID based autosamplers
- Robotics, XYZ, rotation and belts
- Sample handling and automated sample prep.
- Software adaptations, EzChrom, Chemstation, OpenLab, Masshunter, etc.
- Customized reporting and coupling to LIMS systems for a complete autonomic analytical solution.
- Third party instruments, 2D Barcode, Balances, Diluters

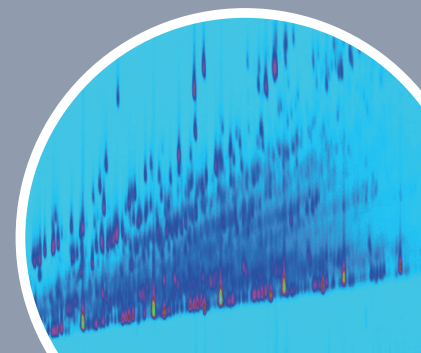
HPLC SOLUTIONS, ANALYZERS AND ACCESSORIES

Next to the standard Agilent instruments in HPLC and UHPLC JSB offers specific solutions for quality control, research or process applications.

- UHPLC
- HPLC
- LCxLC
- Detection: Ri, UV, DAD, FLD, MS, ECD, ELSD, Q TOF, QQQ
- Sample preparation: Autosampling (Combi PAL) Online SPE
- Consumables and supplies for HPLC

OVERVIEW OF SOME OF OUR LC SOLUTIONS

- DART interfaces
- Ion Mobility
- Membrane technology
- Special Syringe pumps
- Direct Insertion Probes

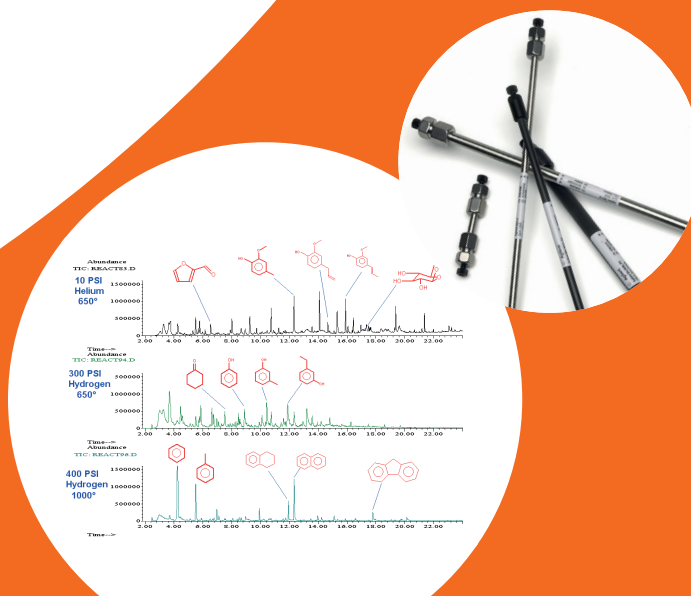


SERVICE AND SUPPORT

JSB offers a wide range of services and support products such as:

- System installation and commissioning
- Instrument instructions
- Application support
- Hardware and software training
- System integration and system connection
- Maintenance and service contracts for a longer lifespan of your analytical equipment
- OQ and PV services

CONSUMABLES





BUSINESS AREA'S

- Petrochemical
- Environmental
- Food and Flavour
- Life Sciences
- Chemical
- Forensics

HEAD OFFICE

JSB International
Tramstraat 15
5611 CM Eindhoven
T +31 (0) 40 251 47 53
F +31 (0) 40 251 47 58

INFO@GO-JSB.COM
WWW.GO-JSB.COM

SALES AND SERVICE

NETHERLANDS
Apolloweg 2B
8239 DA Lelystad
T +31 (0) 320 87 00 18
F +31 (0) 320 87 00 19

BELGIUM
Grensstraat 7, Box 3
1831 Diegem
T +32 (0) 2 721 92 11
F +32 (0) 2 720 76 22

GERMANY, AUSTRIA, SWITZERLAND
Max-Planck-Strasse 4
D-47475 Kamp-Lintfort
T +49 (0) 28 42 9280 799
F +49 (0) 28 42 9732 638

UK & IRELAND
Cedar Court, Grove Park Business Est.
White Waltham, Maidenhead, Berks, SL6 3LW
T +44 (0) 16 288 220 48
F +44 (0) 70 394 006 78

